

Scotland's Rural College

## Identification and Characterization of *Arcanobacterium canis* from Companion Animals in Germany and The United Kingdom

Ningrum, Siti Gusti; Kreitlow, Antonia; Lämmler, Christoph; Prenger-Berninghoff, Ellen; Ewers, Christa; Foster, Geoffrey; Plötz, Madeleine; Abdulmawjood, Amir

*Published in:*

Progress in Microbes and Molecular Biology

*DOI:*

[10.36877/pmmb.a0000391](https://doi.org/10.36877/pmmb.a0000391)

First published: 30/12/2023

*Document Version*

Publisher's PDF, also known as Version of record

[Link to publication](#)

*Citation for published version (APA):*

Ningrum, S. G., Kreitlow, A., Lämmler, C., Prenger-Berninghoff, E., Ewers, C., Foster, G., Plötz, M., & Abdulmawjood, A. (2023). Identification and Characterization of *Arcanobacterium canis* from Companion Animals in Germany and The United Kingdom. *Progress in Microbes and Molecular Biology*, 6(1), Article a0000391. Advance online publication. <https://doi.org/10.36877/pmmb.a0000391>

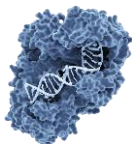
### General rights

Copyright and moral rights for the publications made accessible in the public portal are retained by the authors and/or other copyright owners and it is a condition of accessing publications that users recognise and abide by the legal requirements associated with these rights.

- Users may download and print one copy of any publication from the public portal for the purpose of private study or research.
- You may not further distribute the material or use it for any profit-making activity or commercial gain
- You may freely distribute the URL identifying the publication in the public portal ?

### Take down policy

If you believe that this document breaches copyright please contact us providing details, and we will remove access to the work immediately and investigate your claim.



*Original Research Article*

## Identification and Characterization of *Arcanobacterium canis* from Companion Animals in Germany and The United Kingdom

Siti Gusti Ningrum<sup>1</sup>, Antonia Kreitlow<sup>2</sup>, Christoph Lämmle<sup>3</sup>, Ellen Prenger-Berninghoff<sup>3</sup>, Christa Ewers<sup>3</sup>, Geoffrey Foster<sup>4</sup>, Madeleine Plötz<sup>2</sup>, Amir Abdulmawjood<sup>2\*</sup>

### Article History

**Received:** 02 October 2023;

**Received in Revised Form:** 28 November 2023;

**Accepted:** 20 December 2023;

**Available Online:** 30 December 2023

<sup>1</sup>Faculty of Veterinary Medicine, Universitas Wijaya Kusuma Surabaya, Surabaya, Jl. Dukuh Kupang XXV No.54, Dukuh Kupang, Surabaya, 60225; Indonesia; sitiningrum@uwks.ac.id (SGN)

<sup>2</sup>Institute of Food Quality and Food Safety, University of Veterinary Medicine Hannover, Bischofsholer Damm 15, 30173 Hannover, Germany; antonia.kreitlow@tiho-hannover.de (AK), Madeleine.Plötz@tiho-hannover.de (MP)

<sup>3</sup>Institute of Hygiene and Infectious Diseases of Animals, Justus-Liebig-Universität Giessen, Frankfurter Straße 85-89, 35392 Giessen, Germany; Christoph.Laemmler@vetmed.uni-giessen.de (CL), Ellen.Prenger-Berninghoff@vetmed.uni-giessen.de (EP-B), Christa.Ewers@vetmed.uni-giessen.de (CE)

<sup>4</sup>SRUC Veterinary Services, An Lochran, 10 Inverness Campus, Inverness, IV2 5NA United Kingdom; Geoffrey.Foster@sruc.ac.uk (GF)

\*Corresponding author: Amir Abdulmawjood; Institute of Food Quality and Food Safety, University of Veterinary Medicine Hannover, Bischofsholer Damm 15, 30173 Hannover, Germany; Amir.Abdulmawjood@tiho-hannover.de (AA)

**Abstract:** *Arcanobacterium canis* is a novel species of the *Arcanobacterium* most closely related to *A. haemolyticum*. This study aims to characterize two *A. canis* isolates recovered from companion animals, specifically the claw of a cat and a vaginal swab from a dog. This study used real-time PCR to characterize *A. canis* isolated from companion animals. Two isolates of *A. canis* were recovered from purulent material from the claw of an 11-year-old cat in Germany and a vaginal swab of a dog in the United Kingdom. The samples were characterized phenotypically and genotypically. Both isolates were analyzed using culture methods, biochemical analysis, MALDI-TOF MS, real-time PCR amplification and sequencing of the 16S rRNA gene, and *rpoB*, *gap*, and *tuf* genes. The findings showed that the isolates P5197-15 and M214-96-1 obtained from companion animals were successfully characterized and confirmed to species level by real-time PCR amplification and sequencing of the 16S rRNA gene, as well as the genes of *rpoB*, *gap*, and *tuf*. This study seeks to comprehensively understand the characteristics of *A. canis* isolates obtained from companion animals. Such knowledge is essential for accurate diagnosis, treatment, and control of infections caused by this pathogen in veterinary medicine. Additionally, it contributes to the

broader understanding of the genetic diversity and characteristics of *A. canis*, which can have implications for public health and animal well-being.

**Keywords:** *Arcanobacterium canis*; one health; 16S rRNA gene; *rpoB*; *gap*; *tuf*

---

## 1. Introduction

*Arcanobacterium canis*, is a bacterium that is becoming increasingly important among pets in Germany and the United Kingdom. The investigation of *A. canis* in animal companions, including felines and canines, carries substantial significance<sup>[1]</sup> within the field of this pathogen research. It is crucial to thoroughly understand the microbial environment that characterizes the connection between human and animal well-being. Gaining knowledge about pathogen investigation can provide significant perspectives on the mechanisms of disease dissemination, evolutionary processes, and the potential for zoonotic transmission<sup>[2]</sup>. Identifying and characterizing this pathogen from companion animals can provide valuable insights into their potential implications for human health.

*Arcanobacterium* comprises a group of asporogenous facultatively anaerobic Gram-positive rods<sup>[3]</sup>. These bacteria are commonly found in the microbiota of various animals, including humans, and are generally harmless. However, some species, such as *Arcanobacterium haemolyticum*, can lead to diseases, i.e., pneumonia, acute pharyngitis, and scarlet fever-like rash in humans<sup>[4]</sup> and other animals. Like several species in diverse environments, like those belonging to the *Corynebacterium* and *Trueperella* genera, *Arcanobacterium* species are typically non-pathogenic<sup>[5–7]</sup>. Still, they can occasionally take advantage of unusual access to tissues, such as through wounds<sup>[5,8]</sup> or when the host's defenses are weakened<sup>[9,10]</sup>.

Taxonomic revision of this genus was conducted in 2011<sup>[11]</sup>. In 2012, a novel species of the genus *Arcanobacterium*, most genetically similar to *A. haemolyticum*, was described as *A. canis*. This species could be isolated from mixed infections with several other bacteria from companion animals<sup>[12]</sup>. Further characteristics of *A. canis* have been studied by previous studies using amplification and sequencing of the 16S rRNA gene, as well as the *rpoB* gene encoding the RNA polymerase beta subunit and the *gap* gene encoding glyceraldehyde-3-phosphate dehydrogenase (GAPDH)<sup>[13]</sup>. The isolates investigated were recovered from the external otitis of a seven-year-old female English bulldog (*A. canis* DSM 25104<sup>T</sup>)<sup>[12]</sup>. Additionally, the investigation conducted by Osama et al.<sup>[13]</sup> reported the isolation and characterization of *A. canis* from a nine-year-old Doberman's sperm (*A. canis* 2308), the paw of an eight-year-old female English bulldog suffering from otitis (*A. canis* P3542), the peritoneal effusion of a dog (*A. canis* ZT11003002), and necrotizing fasciitis in a cat (*A. canis* ZT12020010).

Furthermore, the evolving roles of *Arcanobacterium* as an emerging human pathogen have been a subject of discussion<sup>[14]</sup>. Continuing the search for novel sources of

*Arcanobacteria* pathogens is of paramount importance. *A. canis*, a significant *Arcanobacteria* found in companion animals, remains relatively understudied. Hence, it is worthwhile to research *A. canis*, given their potential risk of infecting animals and humans.

This study aims to identify and characterize *Arcanobacterium* isolates originating from the vaginal specimens of dogs in Germany and the claw samples of cats in the UK. The isolates were subjected to culture techniques, biochemical analysis, and MALDI-TOF MS to establish their phenotypic characteristics. Additionally, an optimized real-time PCR method focusing on the 16S rRNA gene and the molecular markers *rpoB*, *gap*, and *tuf* was utilized to determine partial genome sequences from the isolates, facilitating subsequent bioinformatic analyses.

## 2. Materials and Methods

### 2.1. Bacterial isolates

The isolate P5197-15 was collected from purulent material of the claw of an 11-year-old cat during routine microbiological diagnostic tests at the Institute of Hygiene and Infectious Diseases of Animals, Justus-Liebig-Universität Giessen, Germany, in 2015. The organism was obtained in high numbers with *Staphylococcus epidermidis*, and *Staphylococcus haemolyticum*, which both appeared in low numbers. In addition, the isolate M214-96-1 was obtained from a vaginal swab of a dog submitted for diagnostic procedures at the SRUC Veterinary Services, Inverness, UK. Both isolates P5197-15 and M214-96-1 were identified as *Arcanobacterium* spp. by 16S rRNA gene sequencing (GenBank accession no. LT745899 and AJ234062, respectively). *A. canis* DSM 25104<sup>T</sup> was used as the positive control.

### 2.2. Phenotypic characterization

Both isolates, P5197-15 and M214-96-1, were characterized by cultural and biochemical investigation following Christie–Atkins–Munch–Peterson (CAMP)-like hemolytic reactions with *Rhodococcus equi*. Isolates features were evaluated as previously described for *A. canis* and other bacteria of the genus *Arcanobacterium* [15–18]. Deviating from the studies above, cultivation was performed for 24 h at 37 °C under anaerobic conditions using an AnaeroGen<sup>TM</sup> bag (Oxoid Ltd., Basingstoke, UK). Comprehensive biochemical characteristics were determined in triplicate using the API-Coryne test (BioMerieux Deutschland GmbH, Nürtingen, Germany) by the manufacturer's instructions. In addition, MALDI-TOF MS analysis was performed using the extraction procedure described by the previous study [19].

### 2.3. Extraction of DNA from cultures

The genomic DNA of the present and control isolates was isolated using the DNeasy blood and tissue kit (Qiagen GmbH, Hilden, Germany) following the manufacturer's instructions. DNA concentrations and template purities were determined using the NanoDrop<sup>®</sup>2000c spectrophotometer (Thermo Fisher Scientific GmbH, Dreieich, Germany).

## 2.4. SYBR Green real-time PCR

Real-time PCR and data analysis were performed using the LightCycler<sup>®</sup>96 system (Roche Diagnostic GmbH, Mannheim, Germany). Four genomic targets of each isolate, including the 16S rRNA gene and the genes of *rpoB*, *gap*, and *tuf*, were amplified by real-time PCR. The PCR mixture for each gene amplification had a total volume of 30 µL and consisted of the components shown in Table 1. All runs included a negative control reaction without target DNA and one positive control reaction with *A. canis* DSM 25104T template DNA. The fluorescence of all reaction mixtures was measured at the end of the elongation step of each amplification cycle. The PCR cycle number at which the fluorescence curve of a sample intersected with the threshold line (designated as the C<sub>q</sub> value) was recorded. All real-time PCR reactions were evaluated using the LightCycler<sup>®</sup>96 application software. Amplification products were analyzed with melting temperature (T<sub>m</sub>) calling analysis. Subsequently, PCR products were purified and sequenced by Sanger sequencing (Eurofins Genomics Germany GmbH, Ebersberg, Germany). The partial sequences of four different genomic targets of both *A. canis* isolate P5197-15, and M214-96-1 were aligned and analyzed using the clusterW approach of MegAlign version 15. Additionally, sequences of the 16S rRNA gene, as well as of genes *gap*, *tuf*, and *rpoB*, were compared to reference sequences of other *Arcanobacterium* and *Actinomyces* isolates available at the GenBank database using the BLAST algorithm provided by the National Center for Biotechnology Information (NCBI).

**Table 1.** Sequences of oligonucleotide primers and thermal cycling settings.

Oligonucleotide primers	Sequences	Program*	Primers References
16 rRNA UNI-L	5'-AGAGTTTGATCATGGCTCAG-3'	1	[20]
16 rRNA UNI-R	5'-GTGTGACGGGCGGTGTGTAC-3'		
<i>rpoB</i> -F	5'-CGWATGAACATYGGBCAGGT-3'	2	[21]
<i>rpoB</i> -R	5'-TCCATYTCRCCRAARCGCTG-3'		
<i>gap</i> -F	5'-TCGAAGTTGTTGCAGTTAACGA-3'	3	[22]
<i>gap</i> -R	5'-CCATTCGTTGTCGTACCAAG-3'		
<i>tuf</i> -F	5'-GGACGGTAGTTGGAGAAGAATGG-3'	4	[18]
<i>tuf</i> -R	5'-CCAGGTTGATAACGCTCCAGAAGA-3'		

\*Thermal cycling conditions:

1: 10 µL PCR gradient water, 15 µL 2× FastStart Essential DNA Green Master (Roche Diagnostic GmbH, Mannheim, Germany), 1 µL of each primer (0.4 µM), and 3 µL of DNA template. Preincubation 1x (10 min at 95 °C), amplification x30 (30 s at 95 °C, 60 s at 58 °C, 60 s at 72 °C), final elongation x1 (5 min at 72 °C), melting x1 (10 s at 95 °C, 60 s at 65 °C, 1 s at 97 °C).

2: 9.5 µL PCR gradient water, 0.5 µL DMSO, 15 µL 2× FastStart Essential DNA Green Master (Roche Diagnostic GmbH, Mannheim, Germany), 1 µL of each primer (0.4 µM), and 3 µL of DNA template. pre-incubation 1x (10 min at 95 °C), amplification x40 (30 s at 95 °C, 60 s at 50 °C, 60 s at 72 °C), final elongation x1 (2 min at 72 °C), melting x1 (10 s at 95 °C, 60 s at 65 °C, 1 s at 97 °C).

3: 9  $\mu$ L PCR gradient water, 0.5  $\mu$ L DMSO, 0.5  $\mu$ L (25 mM)  $MgCl_2$ , 15  $\mu$ L 2 $\times$  FastStart Essential DNA Green Master (Roche Diagnostic GmbH, Mannheim, Germany), 1  $\mu$ L of each primer (0.4  $\mu$ M), and 3  $\mu$ L of DNA template. Pre-incubation 1x (10 min at 95  $^{\circ}C$ ), amplification x40 (30 s at 95  $^{\circ}C$ , 60 s at 42  $^{\circ}C$ , 60 s at 72  $^{\circ}C$ ), final elongation x1 (2 min at 72  $^{\circ}C$ ), melting x1 (10 s at 95  $^{\circ}C$ , 60 s at 65  $^{\circ}C$ , 1 s at 97  $^{\circ}C$ ).

4: 8  $\mu$ L PCR gradient water, 2  $\mu$ L (25 mM)  $MgCl_2$ , 15  $\mu$ L 2 $\times$  FastStart Essential DNA Green Master (Roche Diagnostic GmbH, Mannheim, Germany), 1  $\mu$ L of each primer (0.4  $\mu$ M), and 3  $\mu$ L of DNA template. Pre-incubation 1x (10 min at 95  $^{\circ}C$ ), amplification x30 (30 s at 95  $^{\circ}C$ , 60 s at 58  $^{\circ}C$ , 60 s at 72  $^{\circ}C$ ), final elongation x1 (2 min at 72  $^{\circ}C$ ), melting x1 (10 s at 95  $^{\circ}C$ , 60 s at 65  $^{\circ}C$ , 1 s at 97  $^{\circ}C$ ).

### 3. Results

#### 3.1. Phenotypic results

According to the phenotypic tests (Table 2), both isolates investigated in this study could be reliably identified as *A. canis*. The phenotypic characteristics appeared nearly equivalent to those previously presented for *A. canis* DSM 25104<sup>T</sup>.

**Table 2.** The phenotypical characteristics of *A. canis* be evaluated in this study.

Phenotypical properties	<i>A. canis</i> P5197-15	<i>A. canis</i> M214-96-1	<i>A. canis</i> DSM 25104 <sup>T</sup> *[12]
Hemolysis on sheep blood agar	+	+	+
CAMP-like reaction with <i>Rhodococcus equi</i>	+	+	+
Reverse CAMP reaction	-	-	-
Nitrate reduction	+	-	-
Pyrazinamidase	+	-	-
Pyrrolidonyl arylamidase	+	-	+
Alkaline phosphatase	+	+	+
$\beta$ -Glucuronidase ( $\beta$ -GUR)	(+)	-	+
$\beta$ -Galactosidase ( $\beta$ -GAL)	+	+	+
$\alpha$ -Glucosidase ( $\alpha$ -GLU)	+	+	+
N-acetyl- $\beta$ Glucosaminidase ( $\beta$ -NAG)	+	+	+
Esculin ( $\beta$ -Glucosidase)	-	-	-
Urease	+	-	-
Hydrolysis of Gelatine	+	-	-

Acid formation from:

D-Glucose	+	+	+
D-Ribose	+	+	+
D-Xylose	-	-	-
D-Mannitol	-	-	-
D-Maltose	+	+	+
D-Lactose	+	+	+
D-Saccharose	+	+	+
Glycogen	+	+	+
Catalase	-	-	-

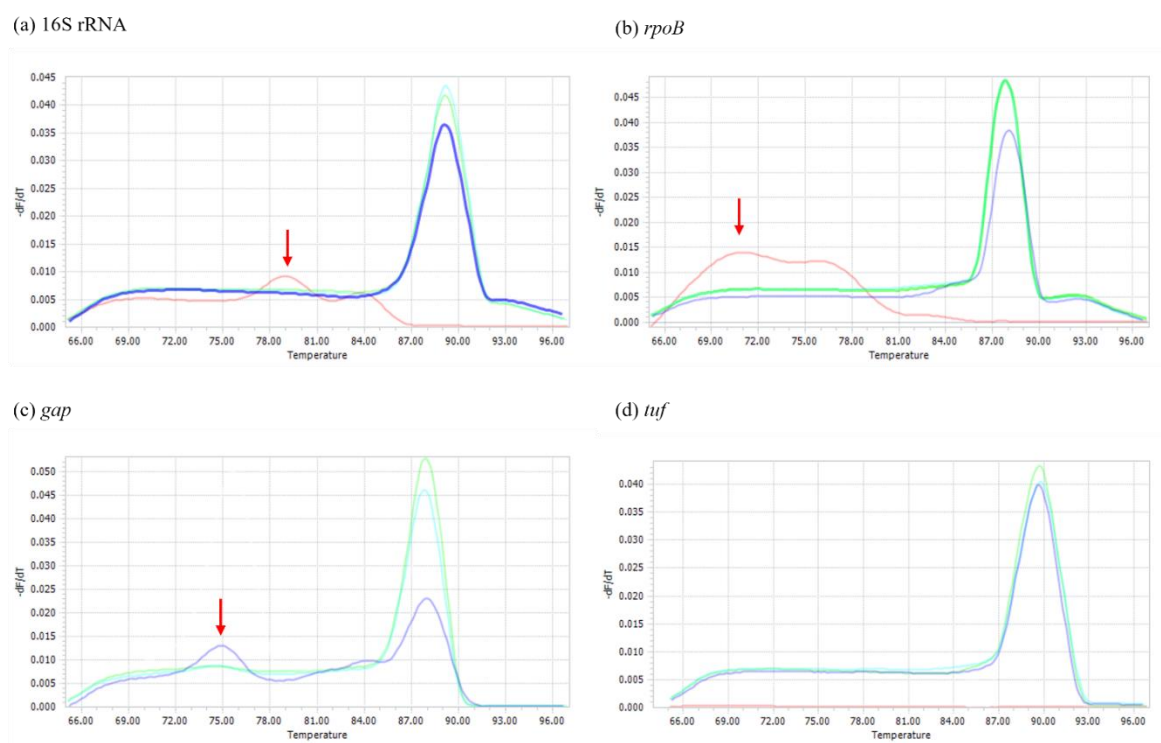
Notes: +: positive reaction; (+): two results showed positive reaction; -: negative reaction by API-Coryne test (BioMerieux Deutschland GmbH, Nürtingen, Germany) with three repetitions.

### 3.2. MALDI-TOF MS results

With log (score) values between 2.14 and 2.54, the studied isolates could be characterized as *A. canis* according to MALDI-TOF MS analysis. They matched type isolate *A. canis* DSM 25104<sup>T</sup> to the species level.

### 3.3. Melting curves analysis

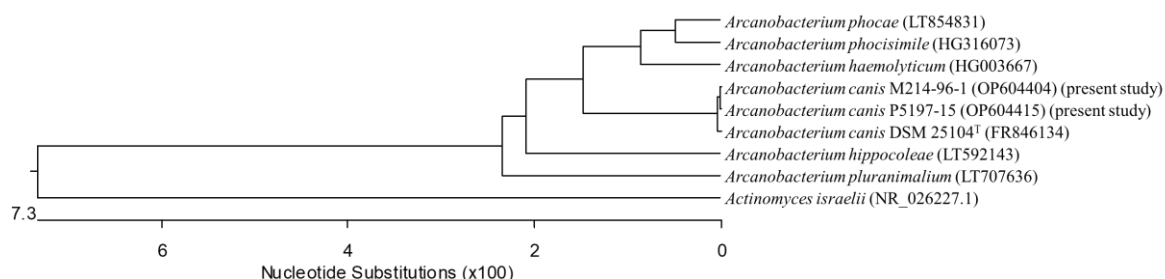
The melting temperature profile of all amplified target genes of isolates P5197-15 and M214-96-1 was specific and similar to those of *A. canis* DSM 25104<sup>T</sup> (Figure 1). T<sub>m</sub> for 16S rRNA, *rpoB*, *gap*, and *tuf* gene amplifications averaged 89.14°C ± 0.04, 86.16°C ± 0.05, 87.89°C ± 0.17, 87.87°C ± 0.04, and 89.73°C ± 0.04, respectively. The weak melting peaks produced from the negative control were due to nonspecific signals or the formation of primer dimers (Figure 1 (a), (c), (d)) with more than 10°C differences of T<sub>m</sub> calling compared to the positive control.



**Figure 1.** Melting curves: (a) 16S rRNA gene; (b) *rpoB*; (c) *gap*; (d) *tuf* gene amplifications; red arrow showing the non-specific signals or formation of primer dimers.

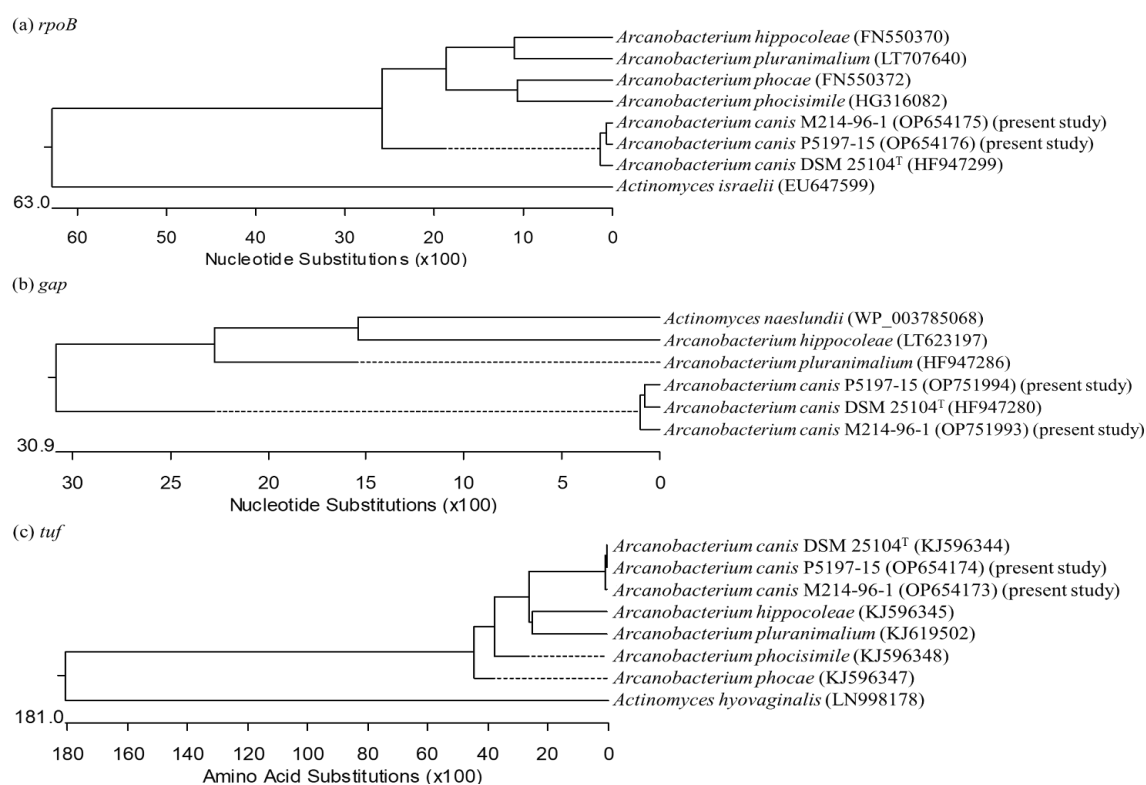
### 3.4. Sequencing results

The species classification based on 16S rRNA gene sequencing indicated a sequence identity of at least 99.9% between *A. canis* isolates P5197-15 and M214-96-1 and *A. canis* DSM 25104<sup>T</sup>. In addition, for the other target genes *rpoB*, *gap*, and *tuf*, the concordance for all molecular targets was 99.5%, 98.9%, and 99.4%, respectively. Figures 2 and 3 depict typical dendrograms of the sequencing data of the 16S rRNA gene and the genes *rpoB*, *gap*, and *tuf*. The alignment of sequences is also shown in Figure 2 and Figure 3.



**Figure 2.** Clustering analysis of the 16S rRNA gene sequences of *A. canis* and other key species of the genera *Arcanobacterium* and *Actinomyces* retrieved from NCBI GenBank. The designation in the parentheses indicates the NCBI accession number.





**Figure 3.** Clustering analysis of the genes: (a) *rpoB*; (b) *gap*; (c) *tuf* of both *A. canis* and other key *Arcanobacterium* and *Actinomyces* species retrieved from NCBI GenBank. The designation in the parentheses indicates the NCBI accession number.

#### 4. Discussion

Because there is a limited number of documented *A. canis* isolates (only five isolates have been officially reported) by Hijazin et al. [12] and Osama et al. [13], isolating this species poses a more significant challenge. Nevertheless, the conventional procedure for identifying and characterizing *A. canis* necessitates a combination of both phenotypic and genotypic tests. Advances in molecular methods, such as real-time PCR followed by sequencing, have improved efficiency and allowed for a more thorough characterization of bacterial species [23–25].

In this study, we focused on two specific isolates of *A. canis*, P5197-15 and M214-96-1, obtained from companion animals. The primary objective was to characterize these isolates using phenotypic and genotypic methods to establish their identity [26–30] as *A. canis*. The initial step involved phenotypic characterization, which assesses the isolates' observable physical and biochemical traits. This process was carried out to determine whether the isolates exhibited key characteristics consistent with *A. canis*. We relied on several criteria, including biochemical properties and CAMP-like hemolytic reactions. These criteria were compared to established reference data (Table 2). Based on the results of the phenotypic

investigation, we determined that both isolates, P5197-15 and M214-96-1, could be reliably identified as *A. canis*. It indicates that the observed phenotypic characteristics of these isolates closely matched those previously documented for *A. canis* DSM 25104<sup>T</sup>, a reference isolate [12]. These phenotypic characteristics are crucial in ensuring accurate species classification since each species of *Arcanobacterium* shows specific phenotype characteristics [18, 26, 31, 32]. The results of this phenotypic research strongly indicated that both isolates were true of the *A. canis* species, as their features closely resembled those of a well-established reference isolate. This phenotypic identification was used for further genotypic investigations to confirm their classification as *A. canis*.

Furthermore, this work utilized MALDI-TOF MS (Matrix-Assisted Laser Desorption/Ionization Time-of-Flight Mass Spectrometry) analysis as a supplementary technique to confirm the classification of the bacterial isolates P5197-15 and M214-96-1 as members of the *A. canis* species. MALDI-TOF MS is a powerful analytical technique that rapidly identifies microorganisms based on their mass spectra, which are unique molecular fingerprints [33, 34]. The analysis generated log (score) values for the two bacterial isolates, which ranged from 2.14 to 2.54. These log (score) values indicate the degree of similarity between the mass spectra of the isolates and the reference spectra in the MALDI-TOF MS database. The key significance of these log (score) values lies in their ability to confirm the identity of the bacterial isolates. In this context, log (score) values between 2.0 and 3.0 are typically considered reliable for species-level identification. Therefore, the log (score) values between 2.14 and 2.54 obtained in this study fall within this range, signifying a strong match between the mass spectra of P5197-15 and M214-96-1 and those of known *A. canis* isolates stored in the MALDI-TOF MS database. The log (score) values effectively classify these isolates as *A. canis*, providing more confidence in phenotypic identification. This result reinforces the conclusion drawn from the phenotypic characterization that P5197-15 and M214-96-1 indeed belong to the species *A. canis*. MALDI-TOF MS is known for its accuracy and speed in identifying microorganisms [35, 36]. It is a valuable tool in clinical and research settings because it can rapidly confirm the identity of bacteria, allowing for quick and reliable species classification [37–39]. The MALDI-TOF MS analysis, with log (score) values falling within the accepted range for species-level identification, served as an independent method to further validate that the bacterial isolates P5197-15 and M214-96-1 were indeed representatives of the species *A. canis*. This analytical technique adds more confidence to the overall identification process, making the species classification more robust and reliable.

The genotypic characterization of the two *A. canis* isolates, P5197-15 and M214-96-1, involved a real-time PCR assay to analyze specific target genes related to the

*Arcanobacterium* genus. To genetically characterize the two isolates, a protocol real-time PCR was developed. This real-time PCR protocol was designed to amplify target genes associated with the *Arcanobacterium* genus specifically. Real-time PCR is a precise and efficient method for quantifying DNA and monitoring the progress of the amplification process in real-time<sup>[40]</sup>. Before conducting the real-time PCR, we determined the DNA yield of the isolates P5197-15 and M214-96-1. This measurement revealed that both isolates had sufficient DNA concentrations, with 28.2 ng/ $\mu$ L for P5197-15 and 27.5 ng/ $\mu$ L for M214-96-1. These concentrations ensured enough genetic material was available as a template for the real-time PCR reactions. To confirm the specificity of the real-time PCR assay, we examined the melting curves generated during the PCR process. Identical melting curves, particularly concerning the position of the melting peak of each PCR product, indicated that the amplification was specific to the target genes<sup>[41, 42]</sup>. This specificity is crucial to ensure that the PCR accurately amplifies only the genes of interest. We determined the melting temperature ( $T_m$ ) profiles for the amplified target genes, including the 16S rRNA gene, *rpoB*, *gap*, and *tuf*. These profiles showed that the  $T_m$  values for each of these genes were very close. For instance, the average  $T_m$  for the 16S rRNA gene was  $89.14^\circ\text{C} \pm 0.04$ . Such closely matched  $T_m$  values suggest that the investigated isolates, P5197-15 and M214-96-1, were genetically similar to *A. canis* DSM 25104<sup>T</sup> at the species level.

Sequencing and subsequent genomic analyses were performed to further confirm the isolates' identity. The results showed that P5197-15 and M214-96-1 shared a high sequence similarity with *A. canis* DSM 25104<sup>T</sup>. Specifically, they exhibited at least 99.9% similarity in the 16S rRNA gene sequence and strong concordance (98.7% to 99.5%) with other molecular targets such as *rpoB*, *gap*, and *tuf*. These molecular targets have been confirmed as powerful genotyping tools for the genus *Arcanobacterium*<sup>[31]</sup>. The high similarity results in this study further confirmed their identification as *A. canis* species. Figures 2 and 3 in the study depict dendrograms based on sequencing data of the 16S rRNA gene and the genes *rpoB*, *gap*, and *tuf*. While the 16S rRNA gene analysis initially allowed for assignment to the genus *Arcanobacterium*, genomic profiling of other characteristic genes (*rpoB*, *gap*, and *tuf*) provided further evidence that both isolates represented the *A. canis* species. This comprehensive genetic analysis solidified the conclusion that real-time PCR was a valuable tool for the molecular characterization of *A. canis*.

Notably, the study highlights that it is the first to describe a real-time PCR workflow specifically tailored for amplifying genomic targets suitable for characterizing *A. canis*. This innovative approach enhances our understanding of the genetic makeup of this bacterial species and contributes to more accurate identification and characterization in research and

diagnostic settings <sup>[43]</sup>. In summary, the genotypic characterization of these *A. canis* isolates involved. The newly established real-time PCR protocol was followed by sequence analysis of the amplified specific targets, DNA yield determination, amplicon specificity confirmation, and analysis of melting temperature profiles and sequence similarity. These comprehensive genetic analyses verified the identity of the isolates as representatives of the *A. canis* species. They underscored the utility of the established real-time PCR protocol for molecular characterization.

Real-time monitoring of the amplification process and evaluating melting curves obtained from various PCR products allow direct selection of potential *Arcanobacterium* representatives and evaluation of the amplification specificity of characteristic genomic targets. Five isolates of *A. canis* have been reported to cause possible infection in companion animals <sup>[12,13]</sup>. Therefore, this study might help to gain more insight into the pathological significance of this species in companion animals. In addition, real-time PCR offers more capacity for processing large samples, which may benefit larger-scale diagnostics or field studies on the occurrence of *A. canis* in various animal species. We suggest that the established real-time PCR protocol proved to be a suitable tool for selecting potential *Arcanobacterium* candidates and, at the same time, generating templates applicable for sequencing and further characterization of unknown isolates at the species level.

## 5. Conclusions

In summary, this research endeavors to tackle the obstacles related to the isolation and characterization of *A. canis* isolates, a species that has a scarcity of recorded isolates. The research employs a combination of phenotypic and genotypic tests, demonstrating the utility of real-time PCR followed by sequencing for improved efficiency and thorough characterization of *A. canis* isolates. The phenotypic investigation based on biochemical properties and hemolytic reactions successfully identified the two tested isolates (P5197-15 and M214-96-1) as *A. canis*, with characteristics similar to previously reported isolates. Additionally, MALDI-TOF MS analysis confirmed their classification within the *A. canis* species. Genotypic characterization through real-time PCR targeting specific *Arcanobacterium* genes provided further evidence of the isolates' identity. Sequencing and genomic analyses revealed high similarity to the *A. canis* type isolate, confirming their status as representatives of this species. Notably, the study introduces a real-time PCR workflow for amplifying genomic targets specifically for *A. canis*, which has not been described previously. Real-time PCR offers advantages regarding rapid, sensitive, and specific laboratory confirmation of microorganisms. This established protocol allows for real-time monitoring of the amplification process, evaluation of melting curves, and direct selection of potential *Arcanobacterium* representatives, accelerating the identification of isolates eligible for species-level characterization. The findings of this study contribute to our understanding of the pathological significance of *A. canis* in companion animals, as only a limited number

of isolates have been associated with infections in these animals. Furthermore, the real-time PCR protocol's capacity for processing large samples may be valuable for broader diagnostics or field studies on the occurrence of *A. canis* across different animal species. In summary, this research presents a useful molecular diagnostic tool for identifying and characterizing *A. canis* isolates, shedding light on the species' potential implications in companion animals and enabling broader-scale investigations.

**Supplementary Materials:** This study's datasets are available in the NCBI GenBank repository ([OM663752](#), [OM673022](#), [OP316951](#), [OP316953](#), [OP316952](#)). All derived data supporting the study's results are accessible upon request from the corresponding author, Dr. med. vet. Amir Abdulmawjood.

**Author Contributions:** Conceptualization, CL, AA, and SGN; methodology, CL, AA, and SGN; investigation, CL, AA, SGN, AK, EP-B, CE, and GF; resources, AA, MP, EP-B, CE, and GF; writing-original draft preparation, SGN, CL; writing-review editing, CL, AA, SGN, MP, AK, EP-B, CE, and GF.; supervision, CL, MP, and AA; project administration, SGN, and AA.

**Funding:** The authors thank the Directorate for Resources of The Ministry of Education and Culture of The Republic of Indonesia, which enabled this publication through the Post-Doctoral Program with Grant No. 3254/E4/DT.04.03/2022.

**Acknowledgments:** We would like to thank Frances Sherwood-Brock for editing the article to ensure good English grammar.

**Conflicts of Interest:** The authors declare no conflict of interest.

## References

1. Stull JW, Anderson ME, and Weese JS. The dynamic nature of canine and feline infectious disease risks in the twenty-first century. *Vet Clin Small Anim Pract* 2019; 49(4): 587-598.
2. Overgaauw PA, Vinke CM, van Hagen MA, *et al.* A one health perspective on the human–companion animal relationship with emphasis on zoonotic aspects. *Int J Environ Res Public Health* 2020; 17(11): 3789.
3. Collins M, Jones D, and Schofield GM. Reclassification of ‘*Corynebacterium haemolyticum*’ (MacLean, Liebow & Rosenberg) in the genus *Arcanobacterium* gen. nov. as *Arcanobacterium haemolyticum* nom. rev., comb. nov. *Microbiology* 1982; 128(6): 1279-1281.
4. Gellings PS and McGee DJ. *Arcanobacterium haemolyticum* utilizes both phospholipase d and arcanolysin to mediate its uptake into nonphagocytic cells. *Infect Immun* 2019; 87(5): 10.1128/iai.00832-18.
5. Sękowska A and Gospodarek-Komkowska E. New species of bacteria in human infections. *Adv Microbiol* 2019; 58(1): 29-34.
6. Lee H, Lee D-H, Joo S-I, *et al.* A Case Report of *Arcanobacterium haemolyticum* Isolated from Diabetic Patient with Cellulitis. *Korean J Clin Lab Sci* 2009; 41(2): 52-56.
7. Barral TD, Portela RW, Seyffert N, *et al.* *Corynebacterium*, *Arcanobacterium*, and *Trueperella*, in *Pathogenesis of Bacterial Infections in Animals*. 2022. p. 701-714.
8. Jenkin A, Mantha P, and Palamuthusingam P. Do we need to change empiric antibiotic use following natural disasters? A reflection on the Townsville flood. *ANZ J Surg* 2022; 92(1-2): 195-199.
9. Nesse LL, Osland AM, and Vestby LK. The Role of Biofilms in the Pathogenesis of Animal Bacterial Infections. *Microorganisms* 2023; 11(3): 608.

10. Adnane M and Chapwanya A. A review of the diversity of the genital tract microbiome and implications for fertility of cattle. *Animals* 2022; 12(4): 460.
11. Yassin A, Hupfer H, Siering C, *et al.* Comparative chemotaxonomic and phylogenetic studies on the genus *Arcanobacterium* Collins *et al.* 1982 emend. Lehnen *et al.* 2006: proposal for *Trueperella* gen. nov. and emended description of the genus *Arcanobacterium*. *Int J Syst Evol Microbiol* 2011; 61(6): 1265-1274.
12. Hijazin M, Prenger-Berninghoff E, Sammra O, *et al.* *Arcanobacterium canis* sp. nov., isolated from otitis externa of a dog, and emended description of the genus *Arcanobacterium* Collins *et al.* 1983 emend. Yassin *et al.* 2011. *Int J Syst Evol Microbiol* 2012; 62(Pt\_9): 2201-2205.
13. Sammra O, Balbutskaya A, Zhang S, *et al.* Further characteristics of *Arcanobacterium canis*, a novel species of genus *Arcanobacterium*. *Vet Microbiol* 2013; 167(3-4): 619-622.
14. Tanz RR. *Sore Throat*, in *Nelson pediatric symptom-based diagnosis*, Kliegman RM, Toth H, Bordini BJ, *et al.* 2018, New York: Elsevier Health Sciences. 1-14.e2.
15. Ülbegi-Mohyla H, Hassan A, Kanbar T, *et al.* Synergistic and antagonistic hemolytic activities of bacteria of genus *Arcanobacterium* and CAMP-like hemolysis of *Arcanobacterium phocae* and *Arcanobacterium haemolyticum* with *Psychrobacter phenylpyruvicus*. *Res Vet Sci* 2009; 87(2): 186-188.
16. Hijazin M, Sammra O, Ülbegi-Mohyla H, *et al.* *Arcanobacterium phocisimile* sp. nov., isolated from harbour seals. *Int J Syst Evol Microbiol* 2013; 63(Pt\_6): 2019-2024.
17. Sammra O, Balbutskaya A, Hijazin M, *et al.* Further studies on *Arcanobacterium phocisimile*: a novel species of genus *Arcanobacterium*. *J Vet Med* 2014; 2014.
18. Ningrum SG, Arnafia W, Sammra O, *et al.* Phenotypic and genotypic analysis of an *Arcanobacterium pluranimalium* isolated from a muskox (*Ovibos moschatus*). *Veterinaria* 2017; 66(1): 28-35.
19. Bastin B, Bird P, Benzinger Jr MJ, *et al.* Confirmation and identification of *Salmonella* spp., *Cronobacter* spp., and other Gram-negative organisms by the Bruker MALDI Biotyper method: collaborative study method extension to include *Campylobacter* species, revised first action 2017.09. *J AOAC Int* 2019; 102(5): 1595-1616.
20. Kuhnert P, Capaul SE, Nicolet J, *et al.* Phylogenetic positions of *Clostridium chauvoei* and *Clostridium septicum* based on 16S rRNA gene sequences. *Int J Syst Evol Microbiol* 1996; 46(4): 1174-1176.
21. Khamis A, Raoult D, and La Scola B. *rpoB* gene sequencing for identification of *Corynebacterium* species. *J Clin Microbiol* 2004; 42(9): 3925-3931.
22. Sammra O, Balbutskaya A, Nagib S, *et al.* Properties of an *Arcanobacterium haemolyticum* strain isolated from a donkey. *Berl Munch Tierarztl Wochenschr* 2014; 127: 10-14.
23. Ferone M, Gowen A, Fanning S, *et al.* Microbial detection and identification methods: Bench top assays to omics approaches. *Compr Rev Food Sci Food Saf* 2020; 19(6): 3106-3129.
24. Rizzo MG, Carnazza S, De Plano LM, *et al.* Rapid detection of bacterial pathogens in blood through engineered phages-beads and integrated Real-Time PCR into MicroChip. *Sensors Actuators B: Chem* 2021; 329: 129227.
25. Peri AM, Harris PNA, and Paterson DL. Culture-independent detection systems for bloodstream infection. *Clin Microbiol Infect* 2022; 28(2): 195-201.
26. Alssahen M, Hassan AA, Sammra O, *et al.* Epidemiological analysis of *Arcanobacterium phocae* isolated from cases of mink dermatitis of a single farm. *Vet Microbiol* 2020; 243: 108618.

27. Galán-Relaño Á, Gómez-Gascón L, Luque I, *et al.* Antimicrobial susceptibility and genetic characterization of *Trueperella pyogenes* isolates from pigs reared under intensive and extensive farming practices. *Vet Microbiol* 2019; 232: 89-95.
28. Hanafy M, Elhelw R, Soliman S, *et al.* Phenotypic and genotypic characterization of *Pasteurella* species isolated from camels in Egypt. *Adv Anim Vet Sci* 2022; 10(2): 298-306.
29. Alssahen M, Hassan AA, Wickhorst J-P, *et al.* Epidemiological analysis of *Trueperella abortusuis* isolated from cases of pig abortion of a single farm. *Folia Microbiol* 2020; 65: 491-496.
30. Dias ME, Moni CA, Lopes CE, *et al.* Unexplained reproductive failure in a Thoroughbred mare with a uterine infection by *Arcanobacterium hippocoleae*. *Equine Vet Educ* 2023.
31. Alssahen M, Foster G, Hassan AA, *et al.* First isolation of *Arcanobacterium pinnipediorum* from a grey seal pup (*Halichoerus grypus*) in the UK. *Folia Microbiol* 2022: 1-7.
32. Sammra O, Foster G, Hassan AA, *et al.* *Arcanobacterium bovis* sp. nov., isolated from the milk of a cow with mastitis. *Int J Syst Evol Microbiol* 2020; 70(7): 4105-4110.
33. Alizadeh M, Yousefi L, Pakdel F, *et al.* MALDI-TOF mass spectroscopy applications in clinical microbiology. *Adv Pharmacol Pharm Sci* 2021; 2021: 1-8.
34. Kostrzewa M, Nagy E, Schröttner P, *et al.* How MALDI-TOF mass spectrometry can aid the diagnosis of hard-to-identify pathogenic bacteria—the rare and the unknown. *Expert Rev Mol Diagn* 2019; 19(8): 667-682.
35. Tsuchida S, Umemura H, and Nakayama T. Current status of matrix-assisted laser desorption/ionization–time-of-flight mass spectrometry (MALDI-TOF MS) in clinical diagnostic microbiology. *Molecules* 2020; 25(20): 4775.
36. Li Y, Shan M, Zhu Z, *et al.* Application of MALDI-TOF MS to rapid identification of anaerobic bacteria. *BMC Infect Dis* 2019; 19(1): 1-11.
37. Tsuchida S and Nakayama T. MALDI-based mass spectrometry in clinical testing: Focus on bacterial identification. *Appl Sci* 2022; 12(6): 2814.
38. Ashfaq MY, Da'na DA, and Al-Ghouti MA. Application of MALDI-TOF MS for identification of environmental bacteria: A review. *J Environ Manage* 2022; 305: 114359.
39. Welker M, Van Belkum A, Girard V, *et al.* An update on the routine application of MALDI-TOF MS in clinical microbiology. *Expert Rev Proteomics* 2019; 16(8): 695-710.
40. Kang TS. Basic principles for developing real-time PCR methods used in food analysis: A review. *Trends Food Sci Technol* 2019; 91: 574-585.
41. del Rio-Lavin A, Jimenez E, and Pardo MA. SYBR-Green real-time PCR assay with melting curve analysis for the rapid identification of *Mytilus* species in food samples. *Food Control* 2021; 130: 108257.
42. Li J, Wei Y, Li J, *et al.* A novel duplex SYBR Green real-time PCR with melting curve analysis method for beef adulteration detection. *Food Chem* 2021; 338: 127932.
43. Sting R, Eisenberg T, and Hrubenja M. Rapid and reasonable molecular identification of bacteria and fungi in microbiological diagnostics using rapid real-time PCR and Sanger sequencing. *J Microbiol Methods* 2019; 159: 148-156.



Author(s) shall retain the copyright of their work and grant the Journal/Publisher right for the first publication with the work simultaneously licensed under:

Creative Commons Attribution-NonCommercial 4.0 International (CC BY-NC 4.0). This license allows for the copying, distribution and transmission of the work, provided the correct attribution of the original creator is stated. Adaptation and remixing are also permitted.